

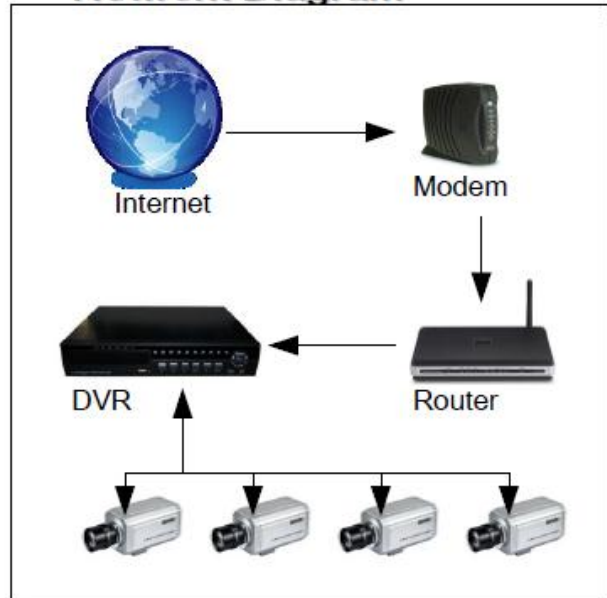
## Getting Started

It is important to know what type of internet connection you have. Note: some ISPs may block certain ports. Consult with your network administrator or ISP if you are having connection difficulties.

### 1. Internet Connection

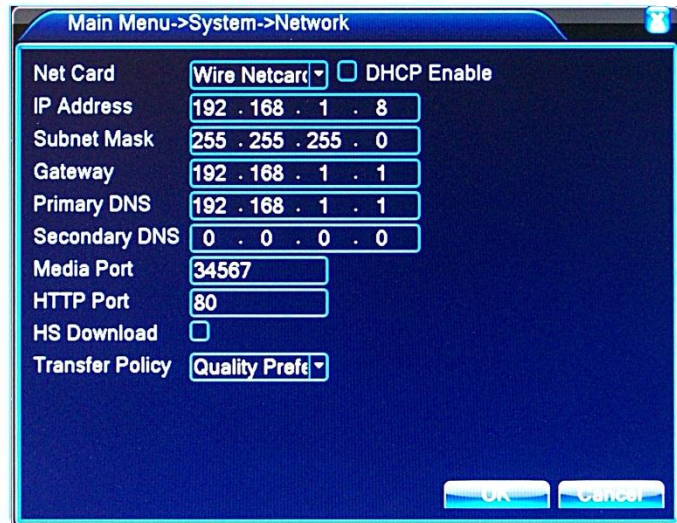
If using a dynamic IP address, the use of a domain name server is required to connect to your DVR ( ie:www.dyndns.com )  
If using a static IP, the use of a domain name server is not required, continue to the next step.

## Network Diagram



### 2. DHCP Settings

If your network does not have DHCP enabled, check with your network administrator for an IP address that is not in use, and is within your routers IP range.



### 3. DVR settings

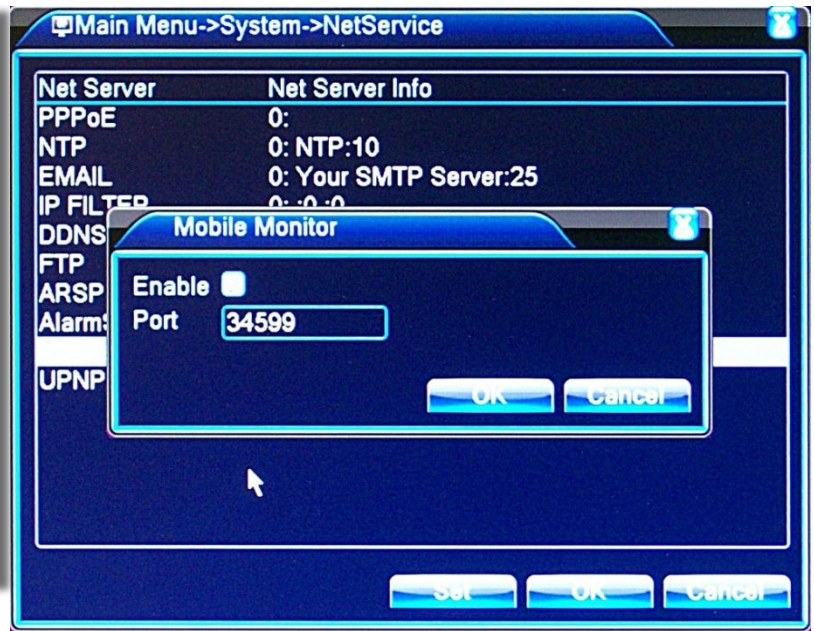
- \* If using DHCP, go to DVR>MAIN MENU>SYSTEM SETUP>NETWORK  
Enable DHCP ( your DVR will obtain all the information it needs from the router )
- \* If DHCP is not used, input the specific IP address, in the ETHERNET IP field
- \* SUBNET MASK and GATEWAY must match your network's settings.
- \* Typically, subnet mask is 255.255.255.0 and gateway will be the IP address of your router ( ex: 192.168.1.1)

## 4. Enabling Mobile Monitor

- \* Enter the Net Service window from the System menu
- \* Select Mobile Monitor
- \* Check the "Enable" box
- \* The default port is 34599

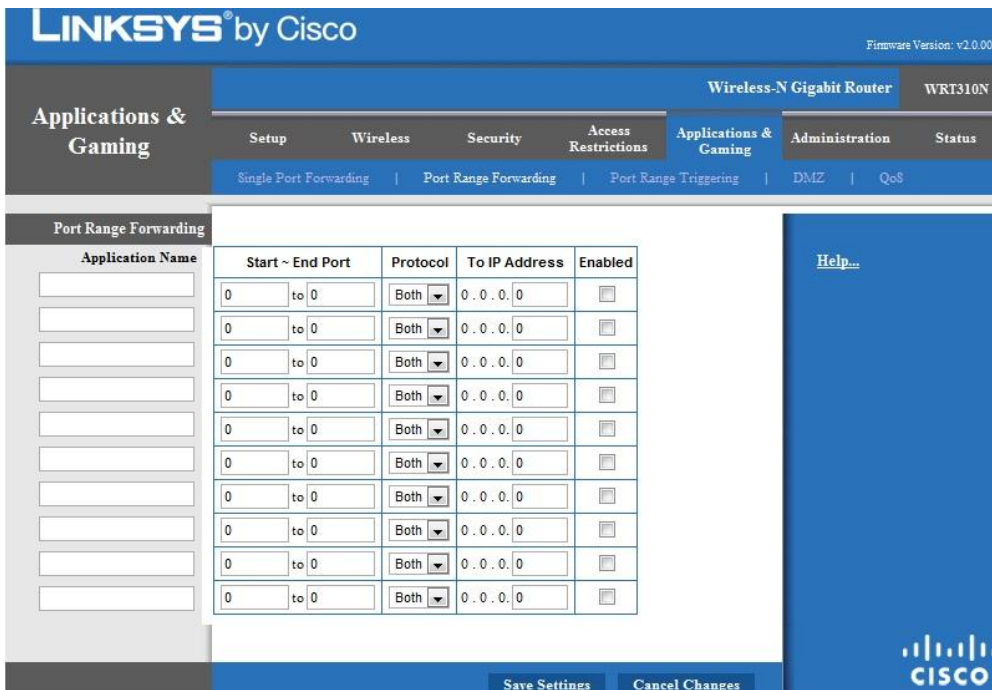
Note: The mobile port is used when configuring a smartphone to connect to the DVR

QQEYE is the smartphone program that is included in the DVR's software CD.



## 4. Router Setup

- \* Once the DVR has been configured, port forwarding must be enabled in the router
- \* You will need to forward ports: 34567, 80, and 34599 to the DVR's IP address
- \* The protocol for all port forwarding rules should be set to both TCP and UDP
- \* Consult the Router's user guide for information regarding port forwarding



PORT FORWARDING HELP  
Consult the router manufacturer's website for more information regarding port forwarding

### USEFUL WEBSITES

- <http://www.portforward.com>
- <http://www.openporttest.com>
- <http://www.whatismyip.com>
- <http://www.dyndns.com>

Example port forwarding screen